

Controlling DL.2 and Axon Media Servers with a grandMA console via Artnet

Hardware Connections

Set the DHCP server to distribute IP addresses within the 2.x.x.x range.

Connect the grandMA, the DL2, a PC running the content management application and a Router as DHCP server to an unmanaged switch. The screencapture examples below show an HP ProCurve 7202dl Router as the DHCP Server.

The screenshot displays the management interface of an HP ProCurve 7202dl Router. The browser address bar shows `http://2.0.0.1/main/system/dhcp/dhcp.html`. The left sidebar contains a navigation menu with categories like 'Getting Started', 'Physical Interfaces', 'DHCP Server', 'Router / Bridge', 'Firewall', and 'Utilities'. The main content area is divided into several sections:

- Add / Modify / Delete DHCP Server Pool**: A form to create a new DHCP server pool. It includes a text input for 'Pool Name' and an 'Add' button. Below it is a table for existing pools.
- (Optional) Add / Delete DHCP Excluded Ranges**: A form to add excluded IP ranges. It includes inputs for 'Start IP Address' and 'End IP Address' (optional), and an 'Add' button. Below is a table of excluded ranges.
- Current Leases**: A section showing a list of currently maintained DHCP leases. It includes a 'Showing 0 to 4 of 4' indicator, a 'rows per page' dropdown, and a table of lease information.

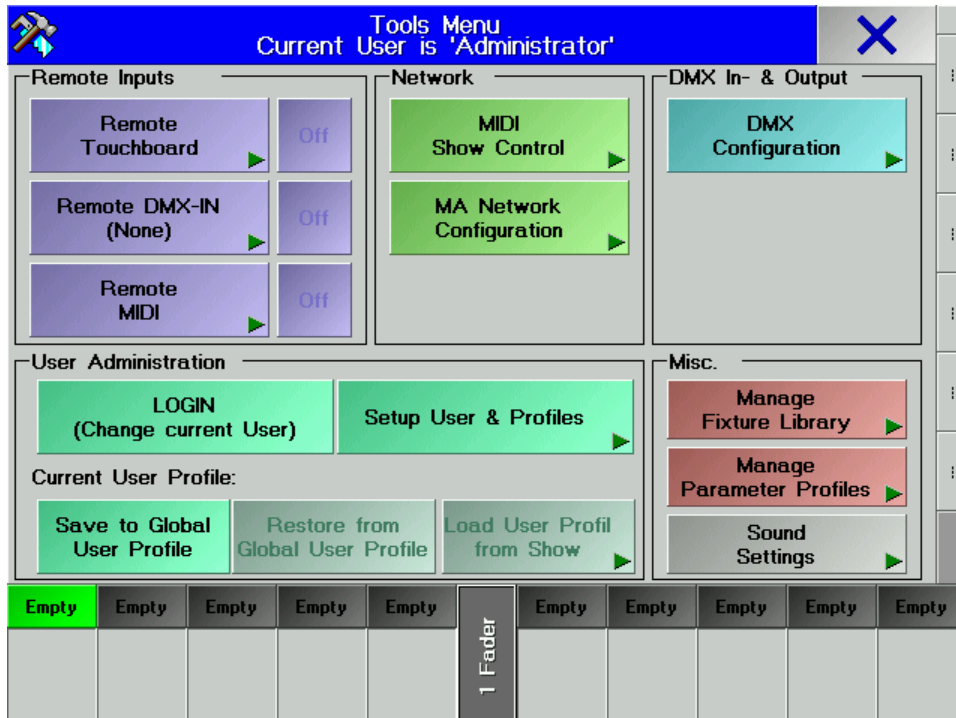
Name	Subnet/Host	IP Address	
MA Artnet	subnet	2.0.0.0/8	Delete

Start Address	End Address	
2.0.0.0	2.1.1.100	Delete
2.1.1.150	2.255.255.255	Delete

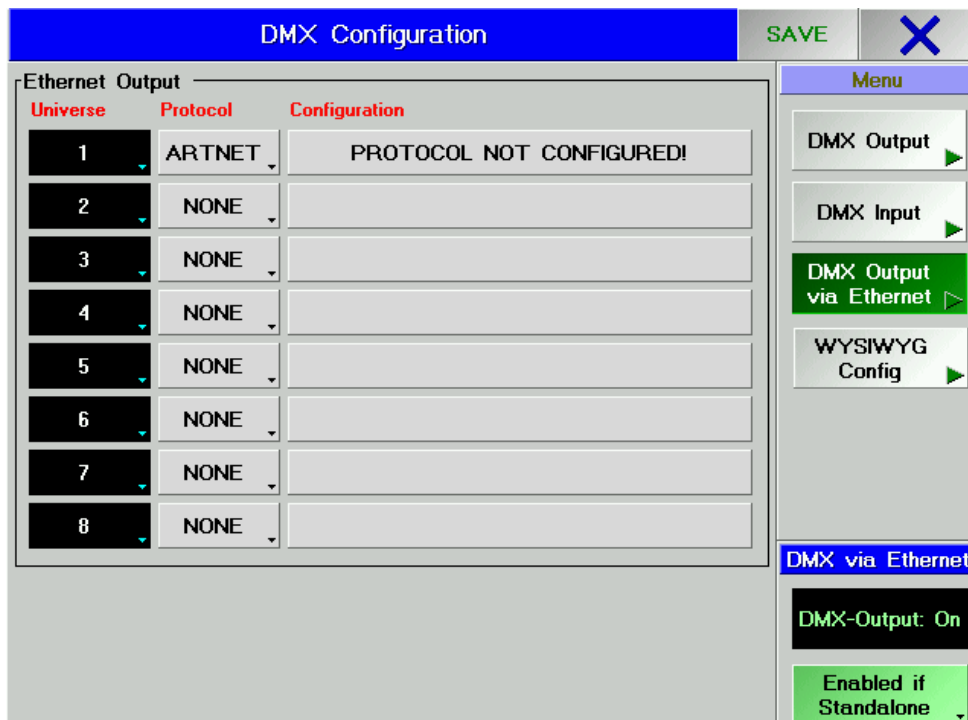
Name	MAC Address	IP Address	Expires
HP-MK	00:16:D4:0C:FD:AD	2.1.1.102	Jan 21 2000 20:30:59
cma	00:11:D8:91:18:39	2.1.1.103	Jan 21 2000 21:41:52
DL2-Q237N4KULFI	00:11:11:40:C0:BF	2.1.1.104	Jan 21 2000 21:45:01
Fiedler	00:12:79:59:5B:E2	2.1.1.101	Jan 21 2000 22:12:00

Configuring the grandMA

- Press the 'Tools' key to open the Tools menu on the main screen. In this menu, press 'DMX Configuration'.



- If the grandMA is not networked to another console, make sure that "Enabled if Standalone" is turned on in the DMX Configuration Window.
- On the right-hand side, press the button, marked 'DMX Output via Ethernet.' Select the desired universe (1-64) , toggle the button in the 'Protocol' column so that it reads 'ARTNET.' Then, press the large button to the right (it will read either 'PROTOCOL NOT CONFIGURED!' or have letters or numbers representing the currently assigned sub-net and ID).



- The Subnet and ID should be set to match the Subnet and Universe on the DL.2. Once you have set the Subnet and ID (located at the bottom of this screen), press the 'Save' button in the top-right, and close the menu. This will drop you back to the DMX Configuration Menu. Once again, save and close.

Control | Protocol | Raw
 DMX | Set | File | Info | Test | Rat

Source: Art-Net Universe: 1 Subnet: 1

Protocol: Standard Start Channel: 1

Fixture ID: 1

ArtNet DMX-Ethernet Configuration
SAVE
X

Output Slot	Available Nodes		
SUBNET/ID	Short Name	Long Name	Status

Attention:
 MA uses only Net 2.x.x.x for Aristic License Protocol !

Parameters for Ethernet-DMX Output 'A'

SUBNET: F ID: F

Current: F F

Scan for Nodes

Edit Node Properties

Activate 'Delayed Output', if ArtNet 'DMX-Hubs' are in use

Delayed Output

Legend:

Used by external Source

Used by internal Slot

Actual used by this Slot

Unused

- Access the MA Network Configuration from the Tools menu
- Make certain that the console's IP address is not within the 2.x.x.x range or set to 127.0.0.1.

MA Network - Consoles
Standalone
✕

Active Network Sessions		
ID	Session Name	Showfile
1	Unconnected	

Stations in Network Session			
No.	Name	Status	IP
1	W364	Standalo	172.0.0.1(100)

My Station

IP-Address: **172.0.0.1(100)**

Name: **W364**

Priority: **Normal**

Invitation: **Enabled**

My Session

ID: **0**

Name: _____

Password: _____

Style: **Multuser**

Local Station

Start Session
Join Session
Leave Session

Remote Station

Invite Stations
Disconnect Stations

Consoles

NSP

Video

NDP

2 Port

Remotes