



Wirelessly Networking a Wholehog 3 console with Hog3PC on your laptop

These instructions are specific to software Version 3.0 or greater.

This document will be useful for those who wish to use Hog3PC as a Remote Focus Unit using a Wireless Access Point (WAP) instead of a wireless router.

What you'll need in addition to the consoles:

- (1) Ethernet Switch
- (1) Wireless Access Point
- Non-crossover (patch) Ethernet cables
- All necessary DP2000s, DMX Processor 8000s or widgets

There are two sets of network configuration options below. You can choose to allow your server console to act as a DHCP server, or you can choose to configure your network manually. These are not the only configurations that will work. For instructions specific to your networking needs, email support@flyingpig.com.

Wholehog products do not include any wireless network devices, so you must connect the Wholehog consoles, all DPs and the WAP using non-crossover (patch) cables to a network switch.

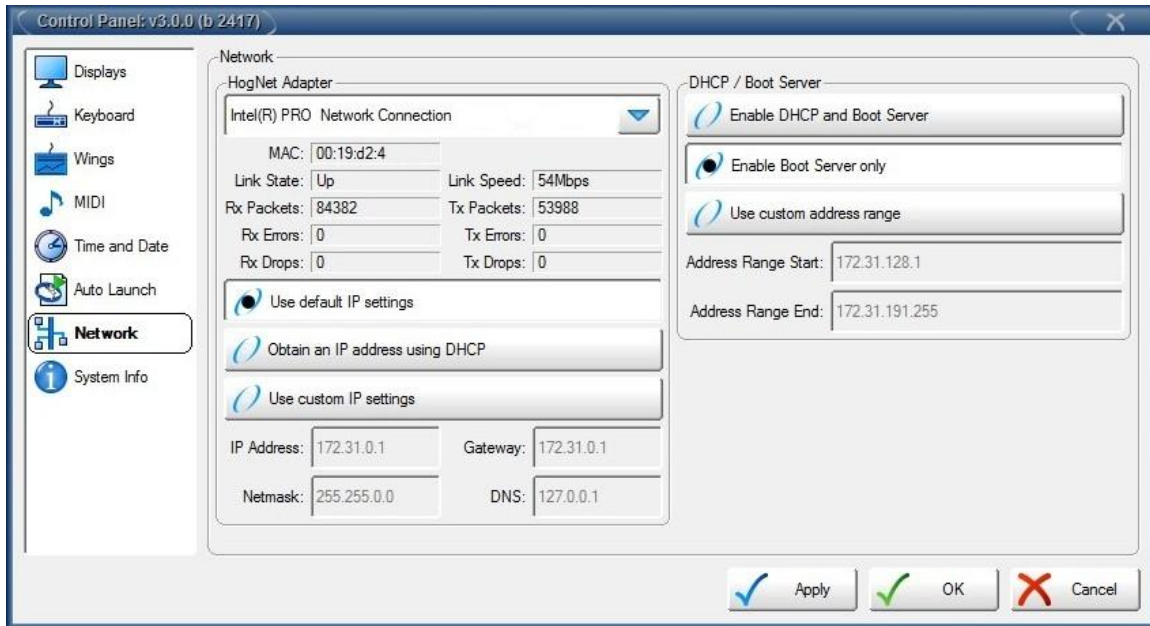
Network Setup Option 1: Manually configuring your network settings

Part 1- Hardware Configuration

1. Connect the Wholehog consoles, the Wireless Access Point and all necessary DPs to the Ethernet switch using non-crossover (patch) Ethernet cables.
2. Ensure all consoles/DPs are running the exact same version and build number of software.

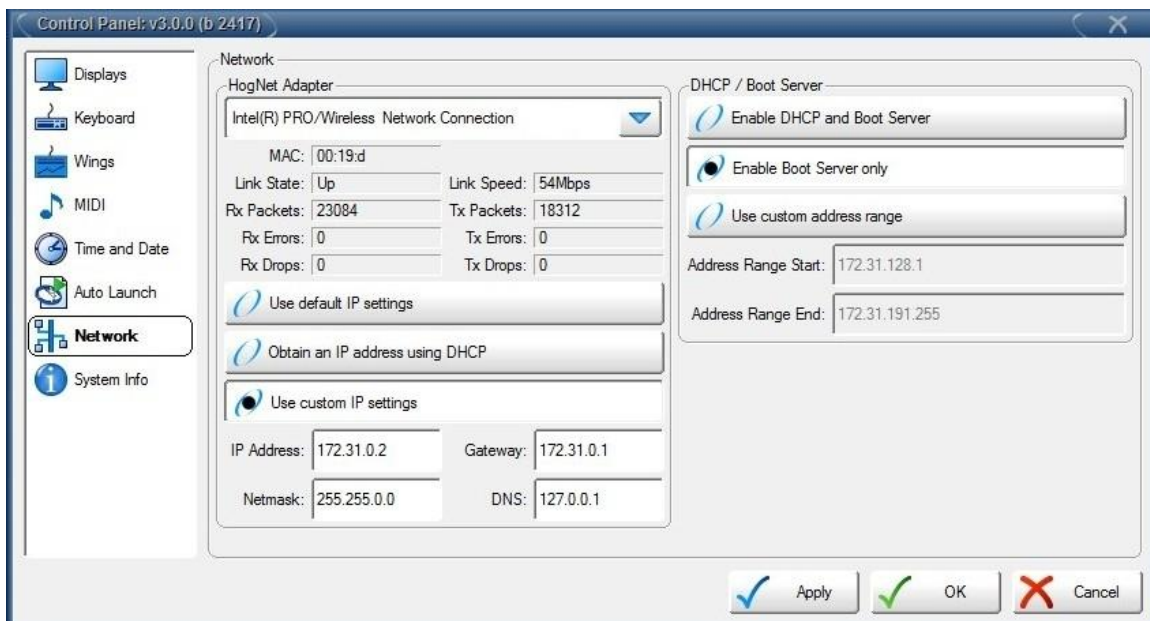
Part 2- Network Configuration for the Server Console

1. Press the SETUP key, and select CONTROL PANEL from your main toolbar (This can also be accessed from the "Start" menu).
2. In the Control Panel, select the NETWORK tab
3. From the drop down menu, under "HogNet Adaptor," the adaptor should list your console's Ethernet port.
4. Select "Use Default IP settings"
5. Under DHCP / Boot Server, select "Enable Boot Server" only
6. Press "OK."



Part 3- Configuring your Hog3PC on your laptop as your client console.

1. Press the SETUP key, and select CONTROL PANEL from your main toolbar (This can also be accessed from the "Start" menu).
2. In the Control Panel, select the "Network" tab.
3. From the drop down menu, under "HogNet Adapter," select your computer's wireless adaptor.
4. Select "Use Custom IP Settings." This will allow you to manually set the IP and Netmask in the same range as your server console. A sample TCP/IP range is detailed below:
 - IP Address: 172.31.0.2 (for additional consoles, change the last digit: *example: 172.31.0.3*)
 - NetMask: 255.255.0.0
 - Default Gateway: 172.31.0.1
 - DNS Server: 127.0.0.1
5. Under DHCP / Boot Server, ensure "Enable DHCP and Boot Server" is not selected.
6. Press "OK."



A note for Hog3PC on your personal computer: You may find that you need to disable any firewalls associated with this network adaptor in order to make the network connection.

Part 4- Logging in as a client

1. Ensure that your server console is currently logged into the show you wish to network.
2. On your Client Console(s):
 - In the Wholehog Start Window, press “Settings”
 - Change the console number to “2” (for multiple clients, make each console a different number)
 - De-select “Run Server”
 - Click OK



3. In the “Connect to Show” section of the Wholehog Start window, you should see the server console listed via its IP address. If it says “No Network Show Found,” try pressing “Rescan.” Once it is listed, you can click the server console to join the session.

Part 5- Configuring the DP2000s or DMX Processor 8000s.

The DP's default setting is to accept an IP and Netmask via DHCP. You will need to change these settings to a manual TCP/IP range. Instructions are listed below.

1. Select “Network” from the LCD screen of the DP
2. Select “IP Status”
3. Select “IP Config”
4. In the IP Config window, you will need to de-select “Use DHCP” by un-checking the box.
5. Also in this window, you will need to set the IP and Subnet to match the range used on your server console.
 - The IP address cannot conflict with the server or client console IP addresses. As with the client consoles, simply change the last digit of the IP addresses (*example: 172.31.0.4, and so on*)
 - The Netmask should be exactly the same (255.255.0.0)
6. After making this change in the DP, you must reset the processor in order for the information to take effect. Simply power cycle the DP to do this.

Network Setup Option 2: Setting your server console as a DHCP server

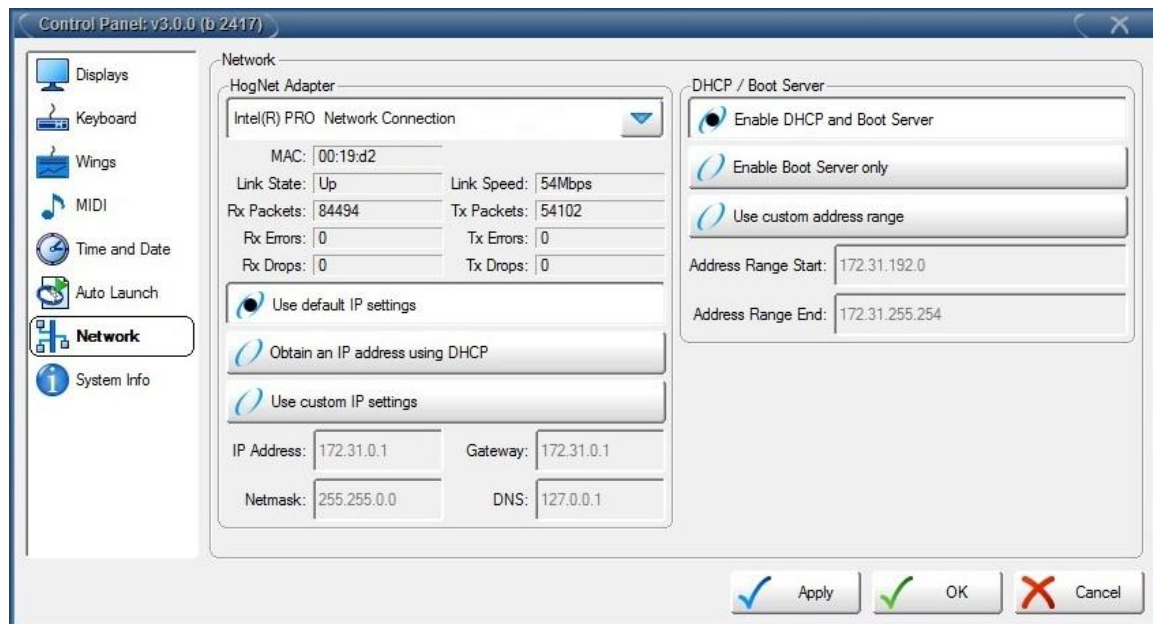
This will allow your console to deliver TCP/IP settings to the client console(s)

Part 1- Hardware Configuration

1. Connect the Wholehog consoles, the Wireless Access Point and all necessary DPs to the Ethernet switch using non-crossover (patch) Ethernet cables.
2. Ensure all consoles/DPs are running the exact same version and build number of software.

Part 2- Configuring your Server Console

1. Press the SETUP key, and select CONTROL PANEL from your main toolbar (This can also be accessed from the "Start" menu).
2. In the Control Panel, select the NETWORK tab
3. Ensure that the settings are as listed below
 - Your HogNet Adaptor should list your console's (or computer's) Ethernet port
 - Select "Use default IP settings"
 - Under DHCP / Boot Server, "Enable DHCP and Boot Server" will need to be selected
4. Press "OK"



Part 3- Configuring your Client Console (Hog3PC on your laptop)

1. Press the SETUP key, and select CONTROL PANEL from your main toolbar (This can also be accessed from the "Start" menu).
2. In the Control Panel, select the NETWORK tab
3. From the drop down menu, under "HogNet Adaptor," select your computer's wireless adaptor.
4. Select "Obtain an IP address using DHCP"
5. Under DHCP / Boot Server, ensure that "Enable DHCP and Boot Server" is not selected.
6. Press "OK."



Note: We also recommend that you disable the firewall associated with your wireless connection while networking with Wholehog 3.

Part 4- Logging in as a client

1. Ensure that your server console is currently logged into the show you wish to network.
2. Set the Hog3PC as a client.
 - In the Wholehog Start Window, press “Settings”
 - Change the console number to “2”
 - De-select “Run Server”
 - Click OK



3. In the “Connect to Show” section of the Wholehog Start window, you should see the server console listed via its IP address. If it says “No Network Show Found,” try pressing “Rescan.” Once it is listed, you can click the server console to join the session.

Part 5- Configuring the DP2000s or DMX Processor 8000s.

The DP's default setting is to accept an IP and Netmask via DHCP. When enabling your server console as a DHCP server, it will distribute TCP/IP information to the DPs in the same manner that it delivers this information to the client console(s). Instructions for confirming the defaults are listed below.

1. Select "Network" from the LCD screen of the DP
2. Select "IP Status"
3. Select "IP Config"
4. In the IP Config window, you will need to select "Use DHCP" by putting a check mark in the box.
5. After making this change in the DP, you must reset the processor in order for the information to take effect. Simply power cycle the DP to do this.

***A Note on DMX Widgets**

FPS widgets and superwidgets can be used in this set-up: but only if the server console is a Hog iPC, Roadhog Full Boar or Hog3PC; or if you are connecting the widgets to a DMX Processor 8000. The Wholehog 3 will not output to widgets or superwidgets.