

# Controlling DL.2 and Axon Media Servers with a grandMA console via Artnet

## Hardware Connections

Set the DHCP server to distribute IP addresses within the 2.x.x.x range.

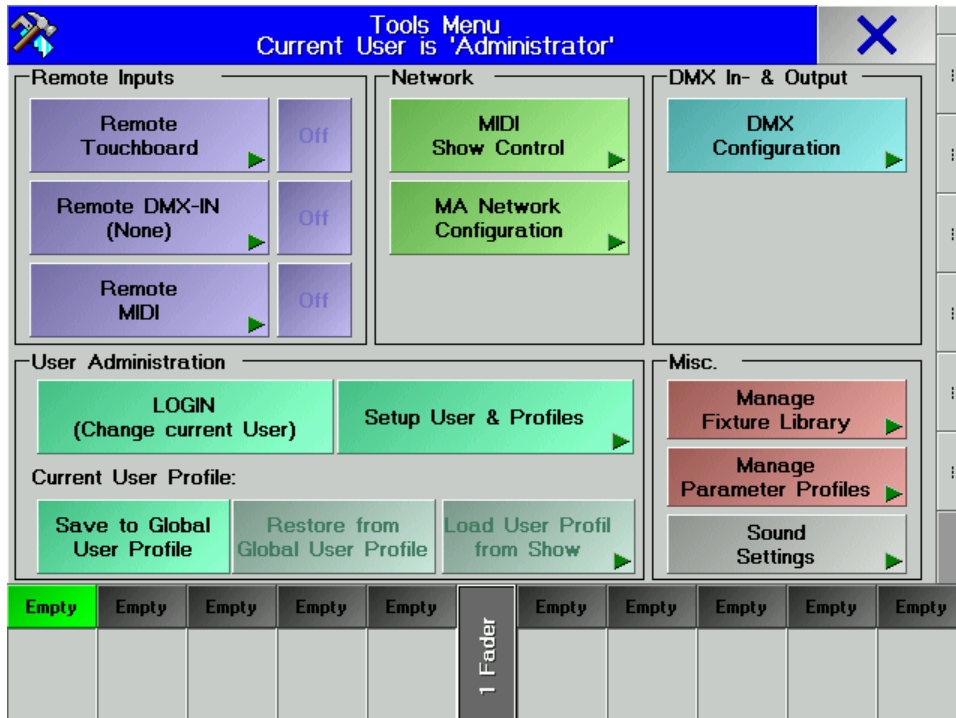
Connect the grandMA, the DL2, a PC running the content management application and a Router as DHCP server to an unmanaged switch. The screenshot examples below show an HP ProCurve 7202dl Router as the DHCP Server.

The screenshot displays the management interface of an HP ProCurve 7202dl Router. The browser address bar shows `http://2.0.0.1/main/system/dhcp/dhcp.html`. The left sidebar contains a navigation menu with categories like 'Getting Started', 'Physical Interfaces', 'DHCP Server', 'Router / Bridge', 'Firewall', and 'Utilities'. The main content area is divided into several sections:

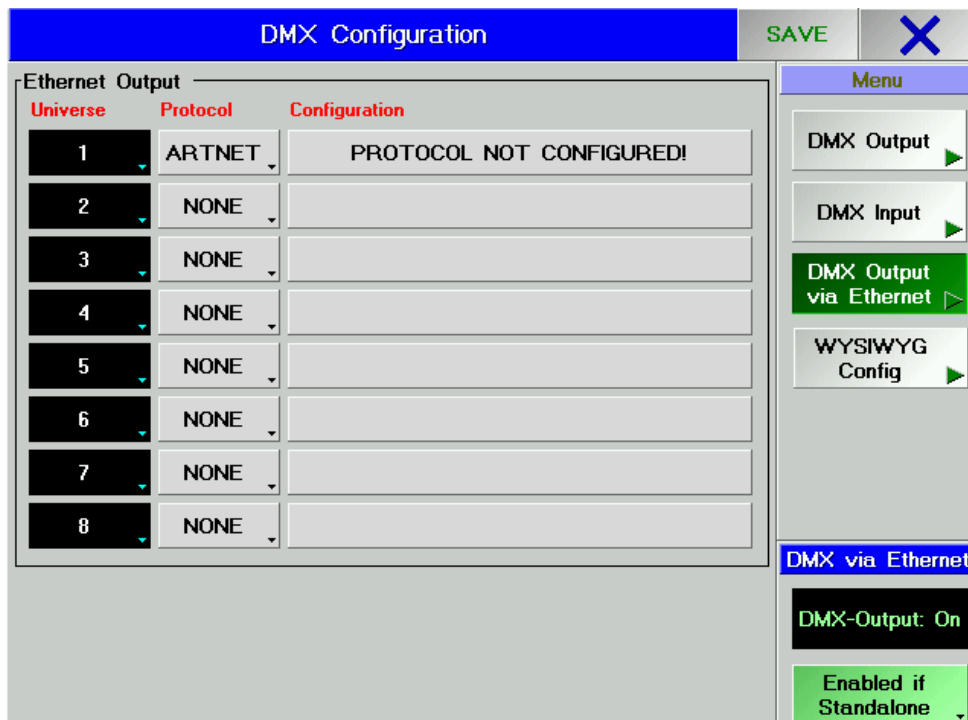
- Add / Modify / Delete DHCP Server Pool**: A section for creating and managing DHCP server pools. It includes a form for 'Add New DHCP server pool' with a 'Pool Name' field and an 'Add' button. Below it is a table for 'Modify/Delete a DHCP Server Pool' with columns for Name, Subnet/Host, and IP Address. One entry is visible: 'MA Artnet' with Subnet/Host 'subnet' and IP Address '2.0.0.0/8'.
- (Optional) Add / Delete DHCP Excluded Ranges**: A section for excluding IP ranges. It includes a form for 'Add an Excluded Range' with 'Start IP Address' and 'End IP Address' fields. Below is a table for 'Excluded Ranges' with columns for Start Address and End Address. Two entries are visible: '2.0.0.0' to '2.1.1.100' and '2.1.1.150' to '2.255.255.255'.
- Current Leases**: A section showing a list of currently maintained DHCP leases. It includes a 'Showing 0 to 4 of 4' indicator and a table with columns for Name, MAC Address, IP Address, and Expires. The table contains four entries: 'HP-MK', 'cma', 'DL2-Q237N4KULFI', and 'Fiedler'.

## Configuring the grandMA

- Press the 'Tools' key to open the Tools menu on the main screen. In this menu, press 'DMX Configuration'.



- If the grandMA is not networked to another console, make sure that "Enabled if Standalone" is turned on in the DMX Configuration Window.
- On the right-hand side, press the button, marked 'DMX Output via Ethernet.' Select the desired universe (1-64), toggle the button in the 'Protocol' column so that it reads 'ARTNET.' Then, press the large button to the right (it will read either 'PROTOCOL NOT CONFIGURED!' or have letters or numbers representing the currently assigned sub-net and ID).



- The Subnet and ID should be set to match the Subnet and Universe on the DL.2. Once you have set the Subnet and ID (located at the bottom of this screen), press the 'Save' button in the top-right, and close the menu. This will drop you back to the DMX Configuration Menu. Once again, save and close.

Control | Protocol | Raw | DMX | Set | File | Info | Test | Rat

Source: Art-Net | Universe: 1 | Subnet: 1

Protocol: Standard

Start Channel

Fixture ID: 1

1

### ArtNet DMX-Ethernet Configuration

SAVE X

Output Slot	Available Nodes		
SUBNET/ID	Short Name	Long Name	Status

Scan for Nodes

Edit Node Properties

Activate 'Delayed Output', if ArtNet 'DMX-Hubs' are in use

Delayed Output

Legend:

- Used by external Source
- Used by internal Slot
- Actual used by this Slot
- Unused

**Attention:**  
MA uses only Net 2.x.x.x for Aristic License Protocol !

#### Parameters for Ethernet-DMX Output 'A'

SUBNET: F ID: F

Current: F F

- Access the MA Network Configuration from the Tools menu
- Make certain that the console's IP address is not within the 2.x.x.x range or set to 127.0.0.1.

MA Network - Consoles
Standalone
✕

Active Network Sessions		
ID	Session Name	Showfile
Unconnected		

Stations in Network Session			
No.	Name	Status	IP
1	W364	Standalo	172.0.0.1(100)

**My Station**

IP-Address: **172.0.0.1(100)**

Name: **W364**

Priority: **Normal**

Invitation: **Enabled**

**My Session**

ID: **0**

Name:

Password:

Style: **Multuser**

**Local Station**

Start Session

Join Session

Leave Session

**Remote Station**

Invite Stations

Disconnect Stations

Consoles

NSP

Video

NDP

2 Port

Remotes